

**13%**

INCREASE in  
Suicide Ideation  
Rate in Arkansas  
during COVID

Who does this program help?

**EVERYONE**

Even children under 18 years of age.

**14**

Number of  
Behavioral  
Health Agency  
partners

**HELP  
IS HERE.**

Promoting Positive Emotions (PPE) is a program with the sole purpose of helping Arkansas residents impacted by the COVID-19 pandemic receive the emotional and behavioral health services they need. But we need your help in letting folks know about this help!

WHO WILL  
FIND OUT I  
HAVE CALLED?

**NO  
ONE**

IT'S  
COMPLETELY  
CONFIDENTIAL.

**95%**

INCREASE in  
Suicide Ideation  
Rate in Children  
10-14yrs old  
during COVID

**ZERO**

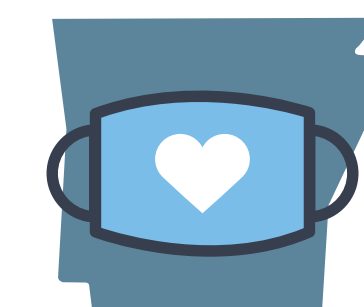
AMOUNT OF JUDGEMENT  
IN ADMITTING YOU  
NEED HELP

**All 75** NUMBER OF COUNTIES IN  
WHICH HELP IS AVAILABLE

**833-993-2382**

24hr Crisis Support Line

**STAYPOSITIVEARKANSAS.com**



**Promoting  
Positive  
Emotions**